

K2 lectern - Mahogany

Modern lecterns - now for you

Modernize your image and enjoy

Stylish and elegant, the lectern K2 offers the warmth and richness of the wood in a two-tone finish treated with finesse. Natural wood facade, offering a silky mahogany stain on its sides, complemented by a robust aluminum top, the K2 is one of the stars of our collection.

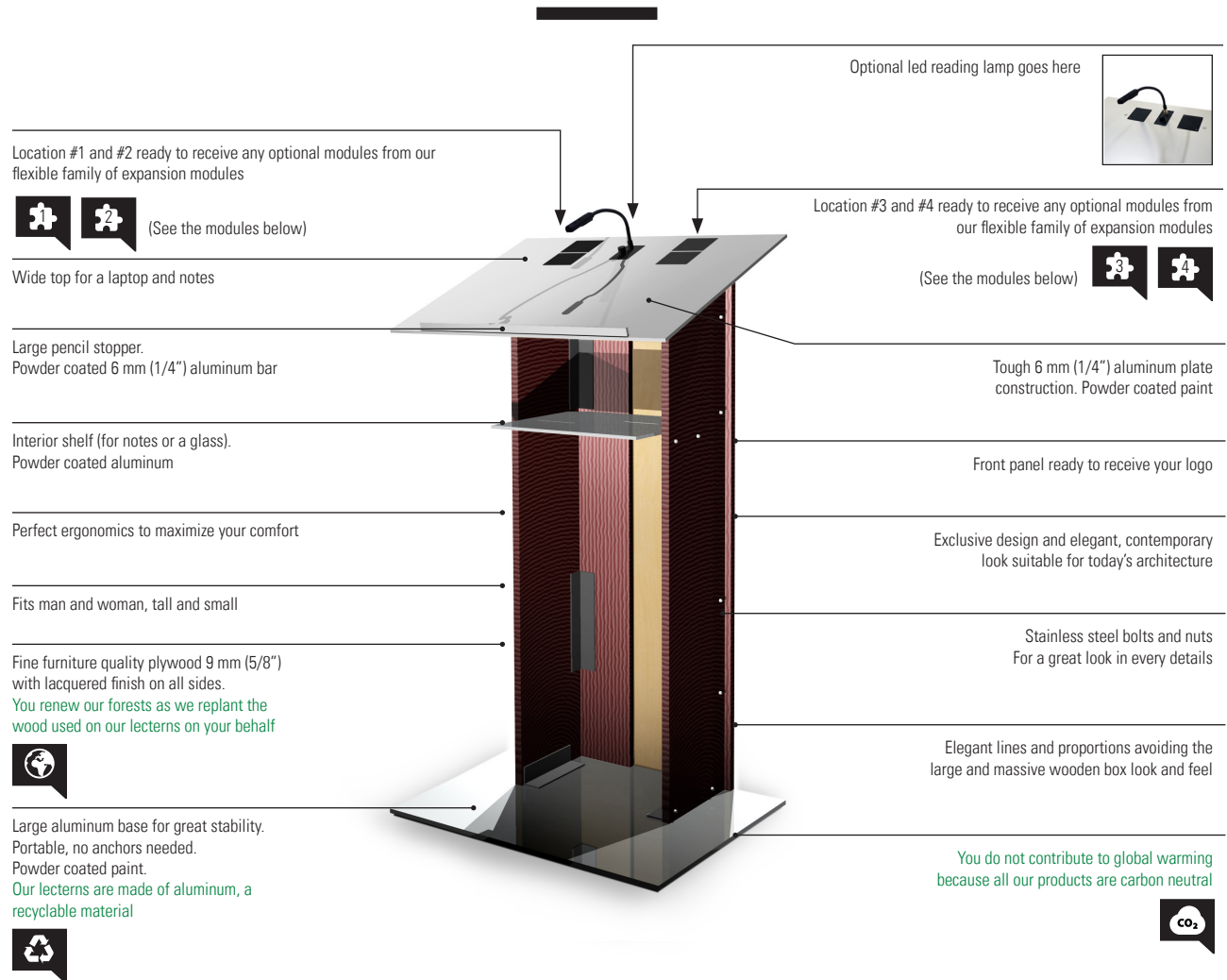
This is a perfect podium for giving conferences, public presentations or speeches. Simple to use, lots of nice options. (Assembly required).



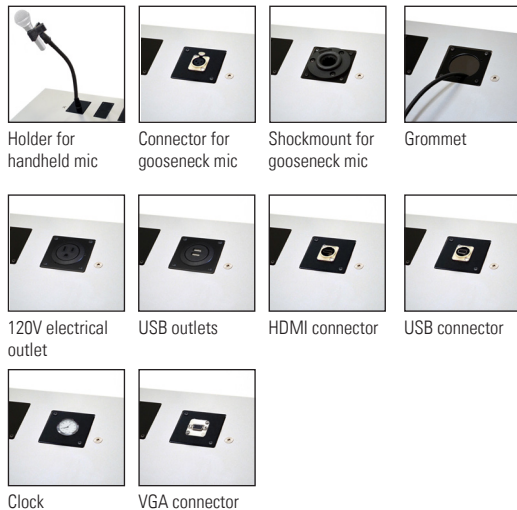
(shown with LED reading light available as an option)

K2 lectern - Mahogany

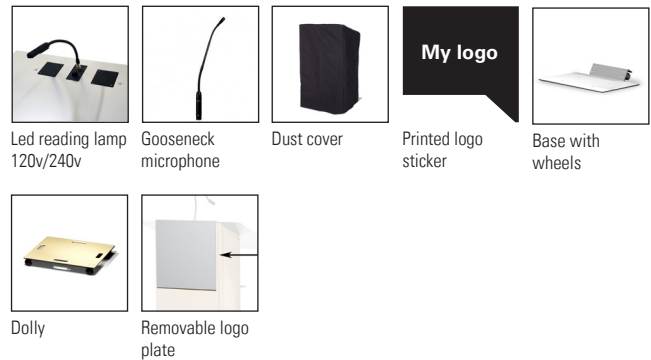
Simple options and clean design to set you free



Expansion modules for this model - available as options



Other available options for this model



Other info

Dimensions	W 610 mm (24") x D 510 mm (20")
Height	1143 mm (45")
Reading area	W 610 mm (24") x D 510 mm (20")
Weight	31 kg (68 lbs)